



Product Specifications Sheet (PSI)

Product Name: YF Tuna Saku 10/12 oz **Brand:**
Size specification: 2.-2.5" x 6-7" x1.1/8"



We are HACCP certified, please see enclosed HAACP COC.

Contact Person: Jeff Moore **Telephone:** 949.812.5338

Product Description: YF Tuna Saku 10/12 oz **GTIN:** 00850019757378

Product Country of Origin: VIETNAM **Country processed in:** VIETNAM

Storing condition: Keep at 0°F

Physical properties:

Case Net Weigh: 1 X 10lbs (10lbs Master) **Gross Weight:** 12 lbs. **Dimension:** 13.5 x 10.2 x 5.3 inches

Case Drained Weight: No water loss, natural juice only.

Pallet Tier: 15 cases

Pallet High: 12 rows

Pallet Total Case: 180 cases

Shelf Life: Frozen 2 years from production date.

Thawed/Defrosted shelf life: 3 days with refrigeration.

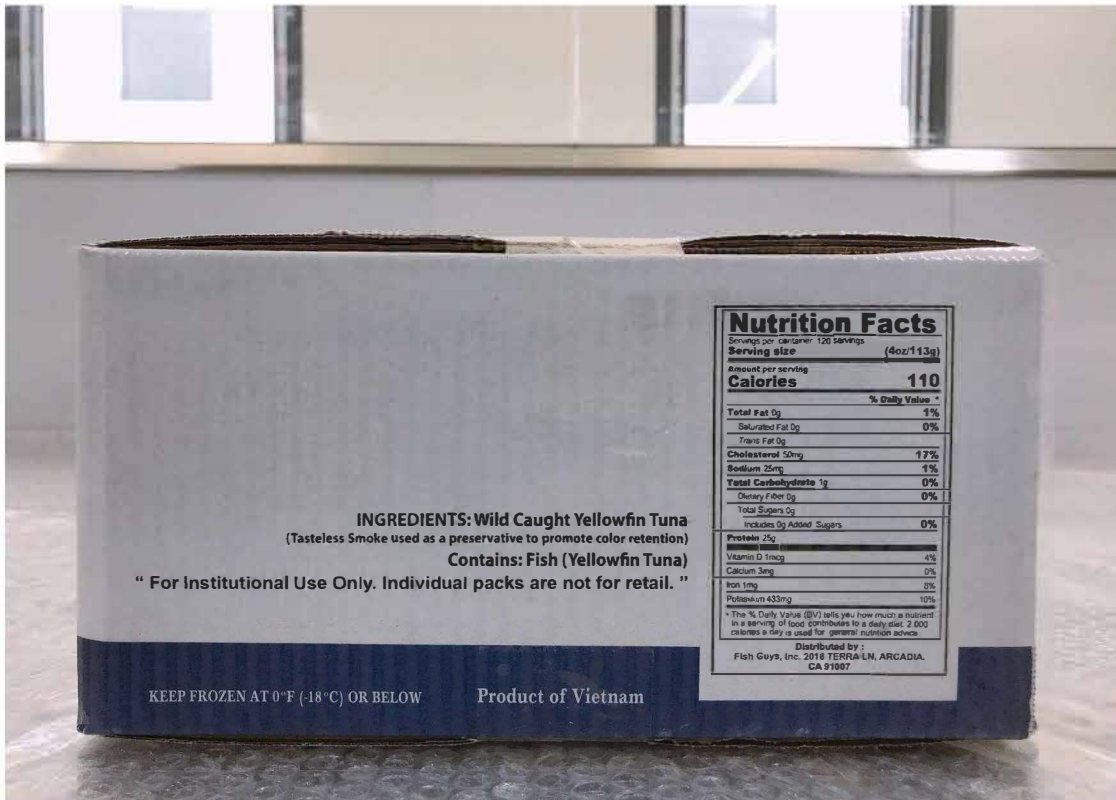
Ingredient: Yellowfin tuna treated with carbon-monoxide for color retention.





GLOBAL
PROTEIN GROUP

Nutrition Facts:



Packaging Information

Type of primary packaging material used (food contact packaging like glass, non glass, etc):
Plastics

Method of packaging: Vacuum-packed

Tracing code information: Master Carton

Coding system: Production date: **DDMMYYYY.**